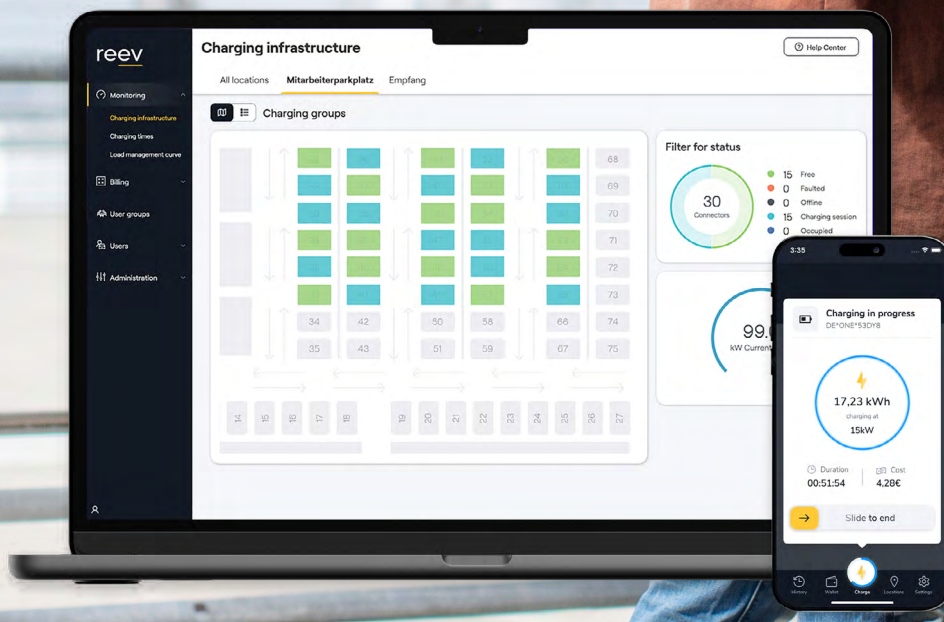


# reev

## Easy. Intelligent. Charging.

360° Charging solutions from  
reev for semi-public spaces



# Contents

The reev Software	1
Uses cases	1
Compatible hardware	2
Your advantages with reev	3
reev Dashboard	4
Functionalities	5
Overview of software licences	6
Dashboard Pro	7
Terms & fees	8
About reev	9

# The reev Software

Operate your charging infrastructure easily and intelligently – with reev.





reev offers the leading Charge Point Management System (CPMS) on the market. We are your partner for software-based and user-friendly charging solutions in semi-public spaces.

With the cloud-based reev Software, you get a simple, transparent and fully automated platform for managing, controlling and billing your charging infrastructure. With our charging platform, you are able to flexibly adapt your charging infrastructure to your requirements.

This is how innovation meets simplicity: the reev Software makes managing and billing your charging stations as easy as child's play, thereby enabling uncomplicated and standardized access to eMobility.

# Use cases

The reev Software is specially designed for complex fleet situations:

-  **Companies: on company premises and charging company cars at home**
-  **Residential and commercial properties**
-  **Hotels and gastronomy**
-  **Parking**

# Compatible hardware

Smooth communication between software and hardware is crucial for optimal operation of your charging stations.

The reev Software meets the open source communication standard OCPP and is compatible with all common hardware manufacturers and models - and more manufacturers are constantly being added.

ABB

MENNEKES®

ALFEN

PCE  
Connection  
to the future

GEWISS

:hager

KEBA®  
Automation by innovation.

ABL

Schneider  
Electric

els spelsberg

Zaptec

...

For a complete overview of compatible hardware models  
visit: [reev.com/en/customers-partners/hardwarepartner/](https://reev.com/en/customers-partners/hardwarepartner/)

# Your advantages with reev



## Flexibility and scalability

We offer solutions for projects of all sizes. Both for small installations and for complex large-scale projects. expansion and Customization is not a problem.



## Simplicity & automation

The reev software is the most user-friendly loading software on the market. The high level of automation of the processes offers maximum simplicity and efficiency in operation.



## Compatibility

With reev you have a wide selection of different hardware: the reev software meets the open source communication standard OCPP and can therefore be combined with a variety of hardware manufacturers.



## Safety & Transparency

All processes are presented transparently and can be viewed at any time. User data is processed in accordance with current data protection law (GDPR) and all charging processes are recorded in accordance with the latest calibration law standards.



## Configuration in under 60 seconds

The fastest configuration on the market: The reev eWizard guides installers quickly and efficiently through the commissioning process and offers help when diagnosing errors.



## Intelligent load & energy management

The intelligent energy management reev Balancer enables the available power to be distributed to the charging points as needed.



## Personal Support

We stand for high and individual commitment. We advise you personally and offer quality support from real experts.



## Partner-Network

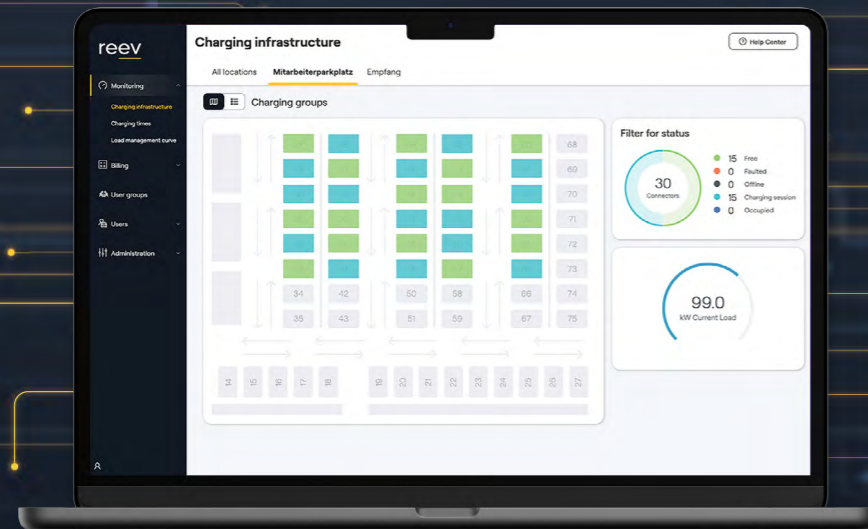
With reev you have an experienced software partner that you can rely on. Our customers benefit from our broad partner network and the expertise it bundles in hardware, software, full service and much more.

# reev Dashboard: Charging infrastructure at a glance

With the reev Dashboard, you get the market leader in the field of Charge Point Management Systems (CPMS).

The reev Dashboard is the online operator portal where operators can monitor and manage their charging infrastructure. It is the control center of the charging infrastructure: here, you manage software functions, adjust settings to your individual needs and view processes.

The intuitive user interface is easy to use and makes managing the charging infrastructure as simple and transparent as possible.



## Functionalities



### Flexible user & tariff management

Creating and managing user groups (such as employees, company car drivers, guests, parking space users) and assigning respective tariffs. The operator chooses the charging tariffs and can always adapt them flexibly.



### Monitoring & management

Clear display of location utilization and charging processes in real time. Central recording of all locations. Error messages can be solved remotely.



### Fully automated billing

Effortless thanks to automatic billing processes. Invoicing on behalf of the operator. Secure payment processing via our partner Stripe.



### Public charging

Make charging stations available for public charging (ad hoc & eRoaming). Access via QR code (for spontaneous chargers) or charging card (eRoaming users).



### reev App for drivers

The reev App is the interface between the operator of the charging solution and the driver. With the reev App, registered users can onboard themselves, manage billing information securely, easily overview the charging process and track it in real time, start and stop charging processes on the move and view their own consumption history.



### reev GHG quota\*

Generate additional income: With the reev GHG quotas, you earn money from every electric vehicle (BEV) in your fleet and receive money per kWh for every charging process at your publicly accessible charging points - even retroactively.

# Overview of software licences

- Access control
- Software updates
- Personal support
- User management
- Monitoring & management
- Smartphone app for drivers
- reev GHG quota\* for eCompany cars & ePool vehicles
- reev GHG quota\* for public accessible charging points
- Charging tariff management
- Automated billing & Payment methods
- Public charging (eRoaming & ad hoc charging)

## Pro

Public charging and automated billing



## Compact

Precise consumption control across multiple locations



\* currently available only in Germany.

# Dashboard Pro

Make full use of all the possibilities of an intelligent charging infrastructure.

The Pro license version is specifically suitable for use cases in which charging processes are to be offered for a fee and billed fully automatically\*. The operator is able to generate additional income with the charging infrastructure and thus use it commercially.

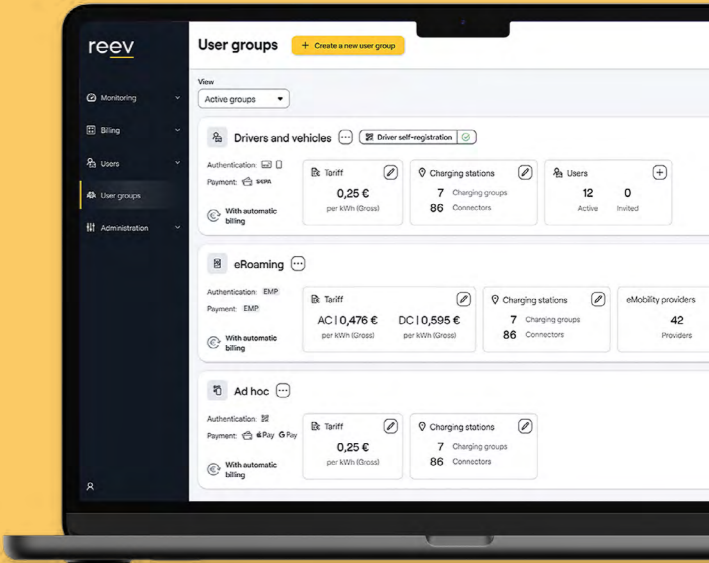
## Who is the reev Dashboard Pro suitable for?

In addition to monitoring features, Pro allows you to:

- Allow different user groups to charge at different tariffs.
- Generate additional income with the charging infrastructure.
- Have charging processes billed automatically and avoid manual effort.
- Document the consumption in kWh precision on various accounting accounts.
- Use public charging (eRoaming & ad hoc charging).
- Billing/invoicing company car drivers' charging processes at home.
- Benefit from both reev GHG quotas\*\* and thus maximize profits with your charging solution.

\* Due to the current regulations on calibration law compliance, billing functions in Germany can only be offered for charging stations that comply with calibration law.

\*\* currently available only in Germany.



# Terms & fees

## The first 24 months

The costs for using the software license in the first 24 months are included in the purchase price of the license key.



## After 24 months

After a runtime of 24 months, the licenses are extended by another year. Fees apply annually.

**Would you like to find out more about our prices?** Or receive an individual offer for your individual use case?

Please feel free to contact us at: [sales@reev.com](mailto:sales@reev.com).

# Upgrade

You purchased the Compact license, but now you need more functions? No problem, you can upgrade to Pro at any time. The upgrade is easily done in the reev Dashboard.

# About reev

reev is a leading eMobility software provider and offers the most user-friendly charge point management system for monitoring, management and billing of networked charging stations. Our charging software combines innovation and simplicity: it creates uncomplicated and standardized access to electromobility and enables the smooth operation of charging infrastructure in semi-public spaces.

## Mission & vision

We believe in the synergy of sustainable mobility and renewable energy supply. Our mission is to give everyone the opportunity to shape the future of electromobility themselves and to actively contribute to the change in mobility. To do this, we provide an individual, transparent and fully automated charging platform for electric vehicles: the reev Dashboard.





# reev

---

reev GmbH  
Sandstraße 3  
80335 Munich

[reev.com](https://reev.com)

+49 (0) 89 215 389 70

[sales@reev.com](mailto:sales@reev.com)